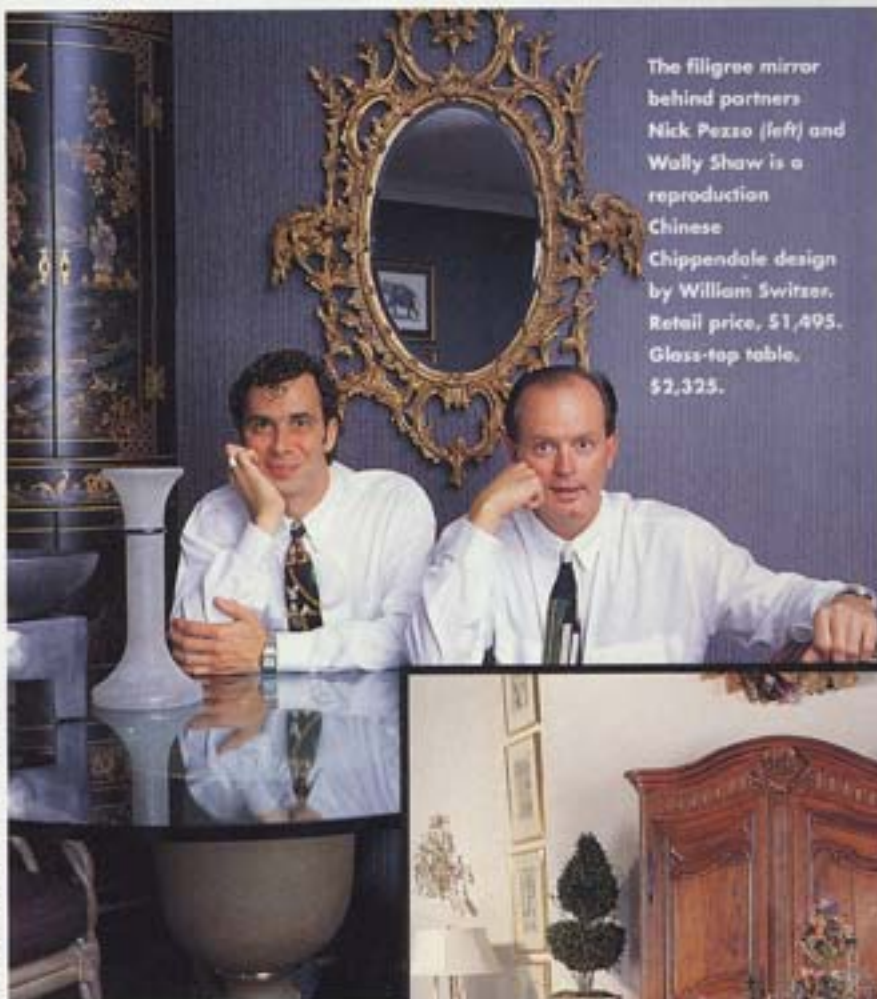


Shaw/Pezzo

Once exclusively "to the trade," this Toronto treasure house expanded its horizons by opening its doors to the public.



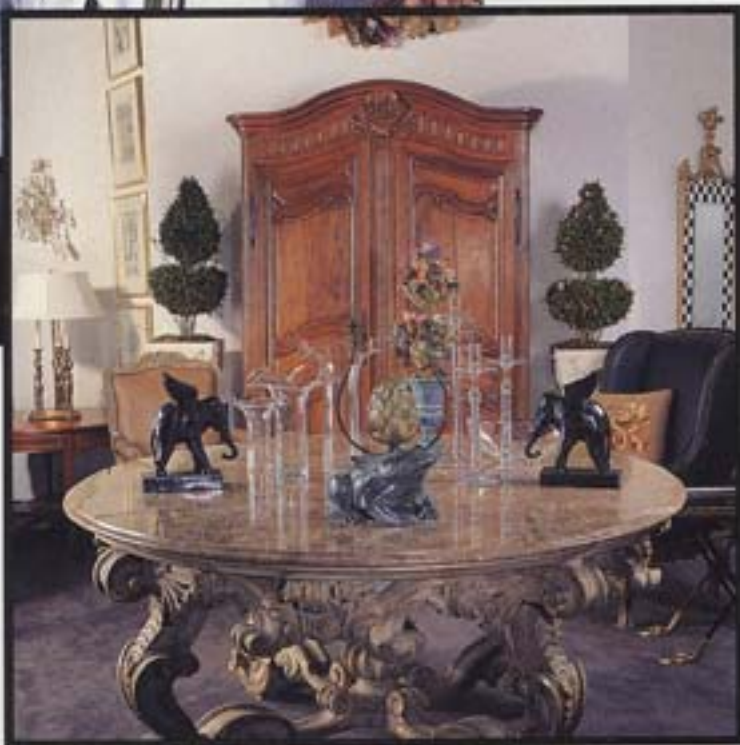
The filigree mirror behind partners Nick Pezzo (left) and Wally Shaw is a reproduction Chinese Chippendale design by William Switzer. Retail price, \$1,495. Glass-top table, \$2,325.

IN THEIR NINE YEARS in business, partners Wally Shaw and Nick Pezzo have travelled the world in search of an eclectic collection of fine furnishings in styles that range from rare antiques to fine, hand-built reproductions to whimsical folk art.

When Toronto's interior designers need just the right accessory to bring a touch of humour and panache to a room, or an important antique or reproduction to anchor a formal decor, as often as not their search begins and ends in the 15,000-square-foot Shaw-Pezzo warehouse and showroom. Now this sophisticated inventory is open to the public on Saturdays. "The demand was there," explains partner Nick Pezzo. "There's a large market

of people who want access to an international collection of fine furnishings, but they don't necessarily want to go through an interior designer." The results? Very gratifying, according to Pezzo. "There's a very relaxed atmosphere here that just doesn't happen during the week." Shaw-Pezzo & Associates,

By Sandra McKenzie



Right: This Italian rococo table is from William Switzer, priced at \$19,995. The carved wood and iron artichoke candlestick retails for \$895. Bronze elephant candleholders, \$665/pair. Behind the table is an 18th-century walnut and oak armoire from France.

PHOTOGRAPHY BY MICHELLE MARINO/LEIC